



ENTREPRENEUR EDUCATION

# OFFSHORE PROMOS

APRIL - DECEMBER 2025

## CONTENTS

**P2** GENERAL ENGLISH

**P4** VET PROMOTIONS INDIVIDUAL COURSES

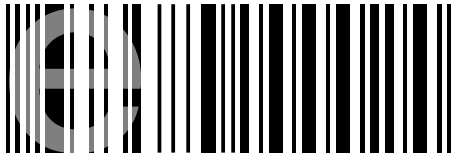
**P5** VET PACKAGES

**P14** HOMESTAY PRICES

**P15** SPECIAL ENGLISH PROGRAMS

**P17** WHAT'S NEW AT ENGLISH

**P18** CONDITIONS & RESOURCE FEES



entrepreneur education

# GENERAL ENGLISH PROMO

APRIL - DECEMBER 2025



## OFFSHORE

**BRAZIL / CHILE / MEXICO / ARGENTINA**

**\$230 per week**  
+ \$10 material fee per week

**EUROPE**

**\$250 per week**  
+ \$10 material fee per week

**JAPAN / THAILAND**

**\$280 per week**  
+ \$10 material fee per week

**KOREA / TAIWAN**

**\$250 per week**  
+ \$10 material fee per week

**REST OF WORLD**

**\$320 per week**  
+ \$10 material fee per week

**ENROLMENT FEE: \$250**

**MATERIAL FEE: \$250 MAXIMUM**

### CONDITIONS

- These promotions are for applications received between 1st April 2025 and 31st December 2025.
- Offshore students will be required to pay in 10 or 12 week blocks.
- If packaging with a VET course on a student visa, maximum study duration will be 24 weeks of General English.
- Students on a pathway into VET courses will need to meet the required English level before entering the VET course.

### Session Times:

**Morning:** 9am-1:15pm

**Night:** 5pm-9:15pm

# SAMPLE TIMETABLES

## Morning Course

Time	Monday	Tuesday	Wednesday	Thursday	Friday
9:00 - 10:00	Grammar & vocabulary revisions	Vocabulary introduction	Reading & vocabulary	Pronunciation & intonation	Speaking & functional usage
10:00 - 11:00	Weekly revision test	Vocabulary tasks & activities	Listening tasks & activities	Grammar tasks & activities	Weekly wrap up
11:00 - 11:15	BREAK				
11:15 - 12:15	Listening & reading test; speaking test	Introduction of weekly grammar points	Grammar support & extension	Listening tasks	CLUBS
12:15 - 13:15	Test correction & feedback	Grammar games & activities	Writing	Speaking practice	

## Night Course

Time	Monday	Tuesday	Wednesday	Thursday	Friday
17:00 - 18:00	Grammar & vocabulary revisions	Grammar introduction	Reading & vocabulary	Pronunciation & intonation	Speaking & functional usage
18:00 - 19:00	Weekly revision test	Grammar use	Grammar Support & extension	Listening support	Weekly wrap up
19:00 - 19:15	BREAK				
19:15 - 20:15	Listening & reading test; speaking test	Vocabulary introduction	Writing	Speaking	CLUBS
20:15 - 21:15	Test correction & feedback	Vocabulary workout	Writing feedback	Grammar practice	

Please note: timetables are subject to change

# VET INDIVIDUAL COURSES

## FACULTY OF DESIGN

	PROMO PRICE	RESOURCE FEE
BSB40820 Certificate IV in Marketing and Communication (38 weeks)	\$6,500	\$400
CUA41120 Certificate IV in Photography and Digital Imaging (38 weeks)	\$7,500	\$800
CUA40720 Certificate IV in Design (40 weeks)	\$6,500	\$450
BSB50620 Diploma of Marketing and Communication (58 weeks)	\$7,500	\$300
CUA50920 Diploma of Photography and Digital Imaging (58 weeks)	\$9,000	\$800
CUA50720 Diploma of Graphic Design (58 weeks)	\$8,000	\$800
BSB60520 Advanced Diploma of Marketing and Communication (58 weeks)	\$7,500	\$400
CUA60320 Advanced Diploma of Graphic Design (74 weeks)	\$9,500	\$800

## FACULTY OF ENTREPRENEURSHIP

	PROMO PRICE	RESOURCE FEE
BSB30120 Certificate III in Business (20 weeks)	\$3,800	\$300
BSB40120 Certificate IV in Business (38 weeks)	\$6,000	\$300
BSB50120 Diploma of Business (58 weeks)	\$7,500	\$300

## FACULTY OF LEADERSHIP

	PROMO PRICE	RESOURCE FEE
BSB50820 Diploma of Project Management (58 weeks)	\$7,500	\$300
BSB50420 Diploma of Leadership and Management (58 weeks)	\$7,500	\$300
BSB60420 Advanced Diploma of Leadership and Management (58 weeks)	\$7,500	\$300
BSB80120 Graduate Diploma of Management (Learning) (104 weeks)	\$21,000	\$1,000

## FACULTY OF HEALTH

	PROMO PRICE	RESOURCE FEE
SIS30321 Certificate III in Fitness (30 weeks)	\$6,200	\$450
SIS40221 Certificate IV in Fitness (54 weeks)	\$7,700	\$450

## FACULTY OF TRADE

	PROMO PRICE	RESOURCE FEE
CPC31320 Certificate III in Wall and Floor Tiling (93 weeks)	\$20,000	\$1,750
CPC30620 Certificate III in Painting and Decorating (93 weeks)	\$20,000	\$1,750

## FACULTY OF HOSPITALITY AVAILABLE IN GOLD COAST & BRISBANE

	PROMO PRICE	RESOURCE FEE
SIT30821 Certificate III in Commercial Cookery (40 weeks)	\$9,000	\$2,000
SIT40521 Certificate IV in Kitchen Management (25 weeks)	\$6,000	\$300
SIT50422 Diploma of Hospitality Management (27 weeks)	\$6,000	\$300

# OFFSHORE PROMO

## SAMPLE PAYMENT PLAN

APR-DEC 2025

Course	No. of Weeks	PROMO Course Tuition	Enrolment Fee	Resource Fee	Minimum Deposit	No. of Monthly Instalments	Monthly Payment
Certificate IV in Marketing and Communication	38	\$6,500	\$250	\$400	\$2,275	8	\$609
Certificate IV in Photography and Digital Imaging	38	\$7,500	\$250	\$800	\$2,925	8	\$703
Certificate IV in Design	40	\$6,500	\$250	\$450	\$2,325	8	\$609
Diploma of Marketing and Communication	58	\$7,500	\$250	\$300	\$2,425	13	\$433
Diploma of Photography and Digital Imaging	58	\$9,000	\$250	\$800	\$3,300	13	\$519
Diploma of Graphic Design	58	\$8,000	\$250	\$800	\$3,050	13	\$462
Advanced Diploma of Marketing and Communication	58	\$7,500	\$250	\$400	\$2,525	13	\$433
Advanced Diploma of Graphic Design	74	\$9,500	\$250	\$800	\$3,425	17	\$419
Certificate III in Business	20	\$3,800	\$250	\$300	\$1,500	3	\$950
Certificate IV in Business	38	\$6,000	\$250	\$300	\$2,050	8	\$563
Diploma of Business	58	\$7,500	\$250	\$300	\$2,425	13	\$433
Diploma of Project Management	58	\$7,500	\$250	\$300	\$2,425	13	\$433
Diploma of Leadership and Management	58	\$7,500	\$250	\$300	\$2,425	13	\$433
Advanced Diploma of Leadership and Management	58	\$7,500	\$250	\$300	\$2,425	13	\$433
Graduate Diploma of Management (Learning)	104	\$21,000	\$250	\$1,000	\$6,500	23	\$685
Certificate III in Fitness	30	\$6,200	\$250	\$450	\$2,250	7	\$664
Certificate IV in Fitness	54	\$7,700	\$250	\$450	\$2,625	12	\$481
Certificate III in Wall and Floor Tiling	93	\$20,000	\$250	\$1,750	\$7,000	21	\$714
Certificate III in Painting and Decorating	93	\$20,000	\$250	\$1,750	\$7,000	21	\$714
Certificate III in Commercial Cookery	40	\$9,000	\$250	\$2,000	\$4,500	8	\$844
Certificate IV in Kitchen Management	25	\$6,000	\$250	\$300	\$2,050	6	\$750
Diploma of Hospitality Management (Cookery)	27	\$6,000	\$250	\$300	\$2,050	6	\$750

# VET PACKAGES



## **FACULTY OF HOSPITALITY PACKAGE**

COOKERY PACKAGE



## **FACULTY OF DESIGN PACKAGES**

GRAPHIC DESIGN

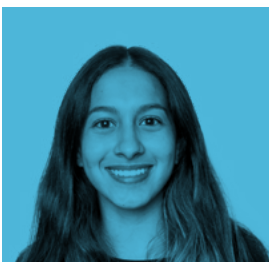
PHOTOGRAPHY

MARKETING



## **FACULTY OF HEALTH PACKAGE**

FITNESS PACKAGE



## **FACULTY OF ENTREPRENEURSHIP PACKAGE**

BUSINESS PACKAGE



## **FACULTY OF LEADERSHIP PACKAGE**

LEADERSHIP PACKAGE

## OFFSHORE PROMO

# COOKERY PACKAGE



ENROLMENT FEE: \$250

## COOKERY PACKAGE

<b>Certificate III in Commercial Cookery</b> \$8,500	+	<b>Certificate IV in Kitchen Management</b> \$6,000	+	<b>Diploma of Hospitality (Commercial Cookery)</b> \$6,000	=	<b>\$23,100</b>
<b>Material Fee</b> \$2000		<b>Material Fee</b> \$300		<b>Material Fee</b> \$300		

## DEPOSIT FOR COE & PAYMENT PLAN

Course	Weeks	Promo Price	Enrolment Fee	Resource Fee	Deposit for CoE's	No. Monthly Instalments	Monthly Payment
<b>Certificate III in Commercial Cookery</b>	40	\$8,500	\$250	\$2000	<b>\$2,875</b>	8	\$984
<b>Certificate IV in Kitchen Management</b>	25	\$6,000	\$0	\$300	<b>\$900</b>	6	\$900
<b>Diploma of Hospitality (Commercial Cookery)</b>	27	\$6,000	\$0	\$300	<b>\$900</b>	6	\$900

# OFFSHORE PROMO

## DESIGN PACKAGE

### OPTION 1 *(Certificate IV + Diploma + Advanced Diploma)*

<b>Certificate IV in Design</b> \$6,000	+	<b>Diploma of Graphic Design</b> \$7,500	+	<b>Advanced Diploma of Graphic Design</b> \$9,000	=	<b>\$24,550</b>
<b>Material Fee</b> \$450		<b>Material Fee</b> \$800		<b>Material Fee</b> \$800		

### OPTION 2 *(Certificate IV + Diploma)*

<b>Certificate IV in Design</b> \$6,000	+	<b>Diploma of Graphic Design</b> \$7,500	=	<b>\$14,750</b>
<b>Material Fee</b> \$450		<b>Material Fee</b> \$800		

**ENROLMENT FEE: \$250**



### OPTION 3 *(Diploma + Advanced Diploma)*

<b>Diploma of Graphic Design</b> \$7,500	+	<b>Advanced Diploma of Graphic Design</b> \$9,000	=	<b>\$18,100</b>
<b>Material Fee</b> \$800		<b>Material Fee</b> \$800		

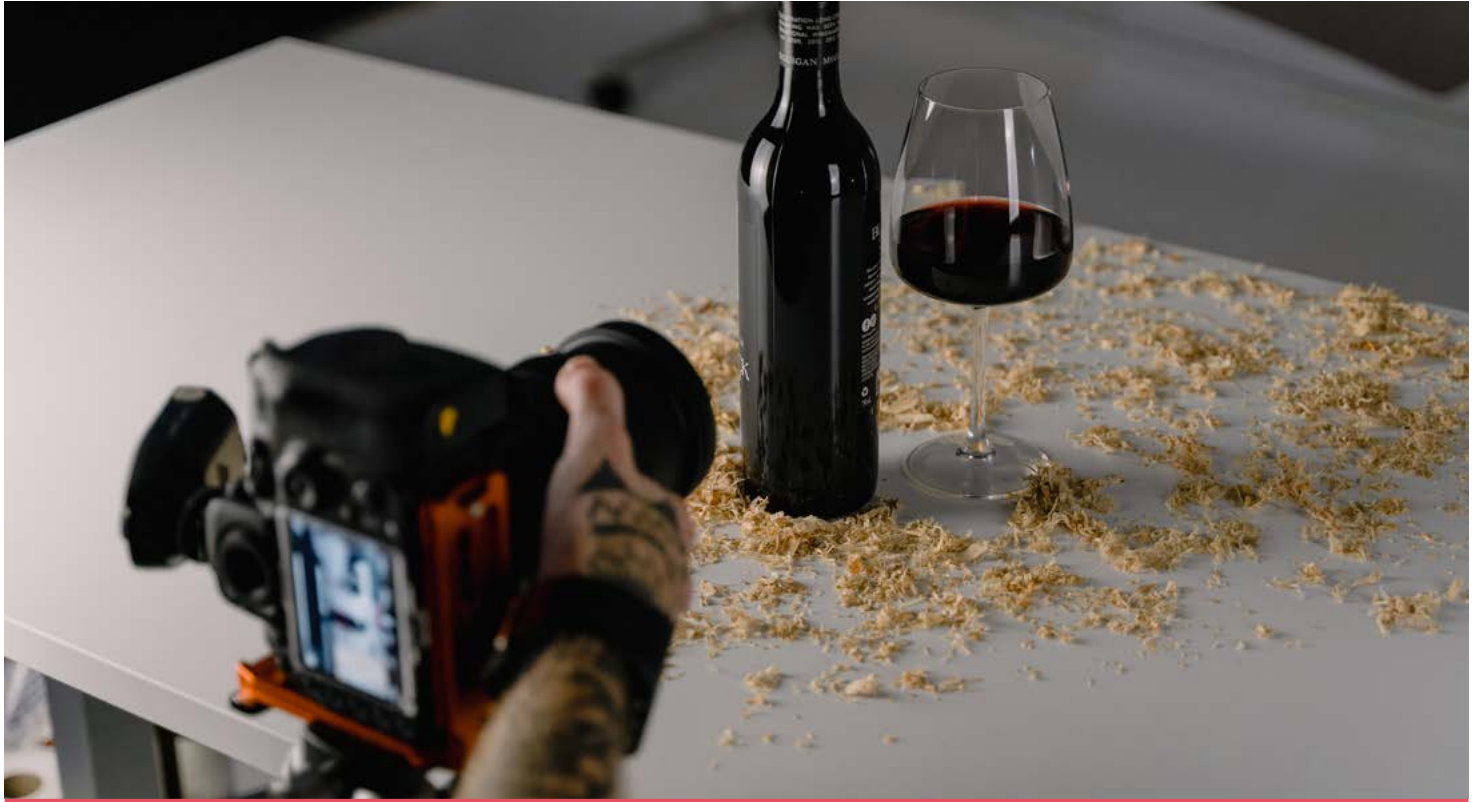
### DEPOSIT FOR COE & PAYMENT PLAN

Course	Weeks	Promo Price	Enrolment Fee	Resource Fee	Deposit for CoE's	No. Monthly Instalments	Monthly Payment
<b>Certificate IV in Design</b>	40	\$6,000	\$250	\$450	<b>\$2,200</b>	8	\$563
<b>Diploma of Graphic Design</b>	58	\$7,500	\$0	\$800	<b>\$1,550</b>	13	\$519
<b>Advanced Diploma of Graphic Design</b>	74	\$9,000	\$0	\$800	<b>\$1,700</b>	17	\$476



OFFSHORE PROMO

# PHOTOGRAPHY PACKAGE



ENROLMENT FEE: \$250

## PHOTOGRAPHY PACKAGE:

Certificate IV in Photography & Digital Imaging \$7,000	+	Diploma of Photography & Digital Imaging \$8,500	=	\$17,100
Material Fee \$800		Material Fee \$800		

## DEPOSIT FOR COE & PAYMENT PLAN

Course	Weeks	Promo Price	Enrolment Fee	Resource Fee	Deposit for CoE's	No. Monthly Instalments	Monthly Payment
Certificate IV in Photography & Digital Imaging	38	\$7,000	\$250	\$800	\$2,800	8	\$656
Diploma of Photography & Digital Imaging	58	\$8,500	\$0	\$800	\$1,650	13	\$588

# OFFSHORE PROMO MARKETING PACKAGE



ENROLMENT FEE: \$250

## MARKETING PACKAGE:

### OPTION 1 *(Cert IV + Diploma)*

<b>Certificate IV in Marketing &amp; Communication</b> \$6,000	+	<b>Diploma of Marketing &amp; Communication</b> \$7,000	=	<b>\$13,700</b>
<b>Material Fee</b> \$400		<b>Material Fee</b> \$300		

### OPTION 2 *(Cert IV + Diploma + Advanced)*

<b>Advanced Diploma of Marketing &amp; Communication</b> \$7,000	+	<b>Certificate IV in Marketing &amp; Communication</b> \$6,000	=	<b>\$21,100</b>
<b>Material Fee</b> \$400				

## DEPOSIT FOR COE & PAYMENT PLAN

Course	Weeks	Promo Price	Enrolment Fee	Resource Fee	Deposit for CoE's	No. Monthly Instalments	Monthly Payment
<b>Certificate IV in Marketing &amp; Communication</b>	38	\$6,000	\$250	\$400	<b>\$2,150</b>	8	\$563
<b>Diploma of Marketing &amp; Communication</b>	58	\$7,000	\$0	\$300	<b>\$1,000</b>	13	\$485
<b>Advanced Diploma of Marketing &amp; Communication</b>	58	\$7,000	\$0	400	<b>\$1,100</b>	13	\$485

# OFFSHORE PROMO FITNESS PACKAGE



ENROLMENT FEE: \$250

## FITNESS PACKAGE

<b>Certificate III in Fitness</b> \$6,000	+	<b>Certificate IV in Fitness</b> \$7,500	=	\$14,400
<b>Material Fee</b> \$450		<b>Material Fee</b> \$450		

## DEPOSIT FOR COE & PAYMENT PLAN

Course	Weeks	Promo Price	Enrolment Fee	Resource Fee	Deposit for CoE's	No. Monthly Instalments	Monthly Payment
<b>Certificate III in Fitness</b>	30	\$6,000	\$250	\$450	<b>\$2,200</b>	7	\$643
<b>Certificate IV in Fitness</b>	54	\$7,500	\$0	\$450	<b>\$1,200</b>	12	\$563

# OFFSHORE PROMO

## BUSINESS PACKAGE

### OPTION 1 *(Certificate III + Certificate IV + Diploma)*

<b>Certificate III in Business</b> \$3,500	+	<b>Certificate IV in Business</b> \$5,500	+	<b>Diploma of Business</b> \$7,000	=	\$16,900
<b>Material Fee</b> \$300		<b>Material Fee</b> \$300		<b>Material Fee</b> \$300		

### OPTION 2 *(Certificate III + Certificate IV)*

<b>Certificate III in Business</b> \$3,500	+	<b>Certificate IV in Business</b> \$5,500	=	\$9,600
<b>Material Fee</b> \$300		<b>Material Fee</b> \$300		

ENROLMENT FEE: \$250

### OPTION 3 *(Certificate IV + Diploma)*

<b>Certificate IV in Business</b> \$5,500	+	<b>Diploma of Business</b> \$7,000	=	\$13,100
<b>Material Fee</b> \$300		<b>Material Fee</b> \$300		



## DEPOSIT FOR COE & PAYMENT PLAN

Course	Weeks	Promo Price	Enrolment Fee	Resource Fee	Deposit for CoE's	No. Monthly Instalments	Monthly Payment
<b>Certificate III in Business</b>	20	\$3,500	\$250	\$300	<b>\$1,425</b>	3	\$875
<b>Certificate IV in Business</b>	38	\$5,500	\$0	\$300	<b>\$850</b>	8	\$619
<b>Diploma of Business</b>	58	\$7,000	\$0	\$300	<b>\$1,000</b>	13	\$485

# OFFSHORE PROMO

# LEADERSHIP PACKAGE

## OPTION 1

Diploma of Project Management \$7,000	+	Diploma of Leadership & Management \$7,000	+	Advanced Diploma of Leadership & Management \$7,000	= \$21,900
Material Fee \$300		Material Fee \$300		Material Fee \$300	

## OPTION 2

Diploma of Leadership & Management \$7,000	+	Advanced Diploma of Leadership & Management \$7,000	= \$14,600
Material Fee \$300		Material Fee \$300	

ENROLMENT FEE: \$250



## OPTION 3

Diploma of Project Management \$7,000	+	Advanced Diploma of Leadership & Management \$7,000	= \$14,600
Material Fee \$300		Material Fee \$300	

## DEPOSIT FOR COE & PAYMENT PLAN

Course	Weeks	Promo Price	Enrolment Fee	Resource Fee	Deposit for CoE's	No. Monthly Instalments	Monthly Payment
Diploma of Project Management	58	\$7,000	\$250	\$300	\$2,300	13	\$404
Diploma of Leadership & Management	58	\$7,000	\$0	\$300	\$1,000	13	\$485
Advanced Diploma of Leadership & Management	58	\$7,000	\$0	\$300	\$1,000	13	\$485

## Gold Coast Student Accommodation Centre

Service Type	Fees	Extra weekly prices	Fee per person
Individual student Homestay placement	\$300 per person	Special Diets - Halal, Gluten Free, Vegetarian, Vegan, Coeliac	\$60
Twin share student Homestay placement	\$250 per person	Christmas Day Surcharge (one off fee, not weekly)	\$50
Homestay Extension Fee	\$150 per person		

Individual Homestay Accommodation weekly prices (2 week minimum stay) *Includes WiFi internet	Fee per person
Room only accommodation	\$320
Breakfast and dinner daily	\$400
Breakfast and dinner weekdays, three meals Saturday and Sunday	\$410
Three meals daily	\$440

Twin share Homestay Accommodation weekly prices (in a shared bedroom) *Includes WiFi internet	Fee for two people
Room only accommodation	\$510
Breakfast and dinner daily	\$680
Breakfast and dinner weekdays, three meals Saturday and Sunday	\$700
Three meals daily	\$740

## Airport Transfers

Service Type	Fee
Private airport transfer from Brisbane airport	\$231 each way
Private airport transfer from Gold Coast airport	\$170 each way
Basic airport transfer from Brisbane airport	\$120 each way
Basic airport transfer from Gold Coast airport	\$90 each way
Surcharge for transfers between 8:00pm and 5:00am	\$55 each way
Surcharge for surfboard or additional luggage (over 1 suitcase and 1 hand luggage item)	\$48 each way



# BARISTA

## 2 WEEK COURSE

### 2025 PROMO

Expires 31st December 2025



### Barista Standalone (or add-on)

**Total = \$900**

#### Visa Type

- Student visa
- Working Holiday visa
- Tourist visa
- 408 visa

#### Includes:

- Material fee
- Barista reference letter
- (optional) Extra unpaid internship, job interview and trial opportunity

- **Practical 2 weeks Barista course**  
Roasting, coffee beans, espresso extraction, milk steaming, latte art, coffee machine maintenance, unpaid internship
- 1:1 or maximum 1:2 teaching at real cafe industry

#### Contact:

[gabriela@101-marketing.com.au](mailto:gabriela@101-marketing.com.au)

[korea@101-marketing.com.au](mailto:korea@101-marketing.com.au)

#### SAMPLE TIMETABLE:

GROUP A GE Morning + Barista		MONDAY	TUESDAY	WEDNESDAY	THURSDAY	FRIDAY
1ST WEEK	09:00 - 13:15	Orientation	English (4h)	English (4h)	English (4h)	English (4h)
	15:00 - 17:00		Barista (2h)	Barista + Practice (2h)	Practice (2h)	
2ND WEEK	09:00 - 13:15	English (4h)	English (4h)	English (4h)	English (4h)	English (4h)
	15:00 - 17:00		Barista (2h)	Practice (2h)		Internship (2h) Time: TBC

Please note: GE Evening timetable 17:00 - 21:15

# DEMI PAIR ENGLISH PROGRAM

ALL REGIONS



\$4,300

12  
WEEKS



## ONLY FOR IMAGINE DEMI PAIRS:

- Onshore Orientation (Bluecard guide, T&C, etc)
- Airport pick up on arrival day (one way)
- Quarterly Demi Pair event

## HOST FAMILY PROVIDES:

- Own room and board
- Monday - Friday: Breakfast & Dinner
- Weekend: 3 meals a day

## STUDENT PROVIDES:

- 15 hours per week Housework & Childcare

*\* Student must hold a working holiday visa or a student visa*

*\* Promotion expires 31st December 2025*

## INCLUDES:

- Enrolment fee
- Resource fee
- 12 weeks GE morning class
- 12 weeks (free extension available) Demi Pair contract
- Pre-interview
- Demi Pair guidebook
- Bluecard
- English certificate
- Demi Pair certificate
- Reference
- Basic airport pick up (one way)



# DISCOVER *WHAT'S NEW* AT ENTREPRENEUR ENGLISH



## BONUS CLASSES (FREE AFTERNOON CLASSES)

Every weekday, enjoy a free, one-hour class to boost your skills and connect with others. Just sign up and show up!



## LEARNING BEYOND THE CLASSROOM

Expand your English skills beyond traditional settings. Learn and apply your skills in real-world environments!



## EXCURSION BOOKING PAGE

Plan your next adventure with ease. Visit our website to browse and book upcoming excursions

Book now: [Excursions Online Booking](#)



## ACTIVITIES CALENDAR

Discover daily activities and excursions every month! Practice English while exploring Australia

Explore here: [Entrepreneur Activities](#)



## NEW SOCIAL MEDIA PAGES

Stay connected with the latest updates at Entrepreneur Education English. Follow us on Instagram for news and highlights!

Click here for our [Instagram page](#)



## STUDENT PORTAL

Manage your enrolment, feedback, payments, and more - all in one place

Watch our video on how to use it: [Watch Now](#)



## ONLINE ENGLISH TESTING

Simplify applications with pre-arrival testing. Email us your student's email address, and we'll handle the rest!



Scan here for all the information you need



## CONTACT US

Phone: 07 5538 6569

Email: [info@entrepreneur.edu.au](mailto:info@entrepreneur.edu.au)

[www.entrepreneur.edu.au](http://www.entrepreneur.edu.au)

Learn. Explore.  
Grow with  
Entrepreneur  
Education English

# OFFSHORE PROMO

## CONDITIONS & RESOURCE FEES



### CONDITIONS

- Above prices ONLY from the 1st April 2025 until 31st December 2025
- Students must send their Enrolment Form to be processed between 1st April 2025 and 31st December 2025
- Students must pay enrolment fees and resource fees
- Students must pass our English requirements
- Graphic Design enrolments must fulfill the design entry requirements
- Offshore students must pay a minimum deposit of \$2,000 for all courses
- (Extras = enrolment fee, resource fee and CoE deposits)
- This PROMO does not apply to any student with a current Letter of offer at Entrepreneur Education

### RESOURCE FEES

- **\$300** (per course, excluding the below) non-refundable
- Certificate IV in Design **\$450**
- Diploma of Graphic Design **\$800**
- Advanced Diploma of Graphic Design **\$800**
- Advanced Diploma of Marketing & Communication **\$400**
- Certificate IV in Marketing & Communication **\$400**
- Certificate IV Photography and Digital Imaging **\$800**
- Diploma of Photography and Digital Imaging **\$800**
- Certificate III in Fitness **\$450**
- Certificate IV in Fitness **\$450**
- Certificate III in Wall and Floor Tiling **\$1,750**
- Certificate III in Painting and Decorating **\$1,750**
- Graduate Diploma of Management (Learning) **\$1,000**
- Certificate III in Commercial Cookery **\$2,000**